

# DOUBLE ROLL CRUSHER

**binder+co**

we process the future

For tasks with low fine grain quantity

---



## Ideal solution for glass recycling

The industry demands on double roll crushers a low energy consumption, a long service life, a low wear and a low quantity of fines. Furthermore, double roll crushers crush glass/cork connections (glass in screw connections or glass around corks), bottlenecks and thick bottle bottoms. Large parts are thus turned into even-sized cullet which can be passed on for optimal separation.

Binder+Co's roller crusher is adaptable to the individual task: the slot width is adjustable to the specific application and input material. The movable supporting structure of the double roll crusher allows easy and fast access for maintenance.



Hard face welded standard rolls for crushing hollow glass cullet. One roll is additionally cross welded for a better feeding of the input material.



Hard face welded and grooved rolls for flat and hollow glass crushing.



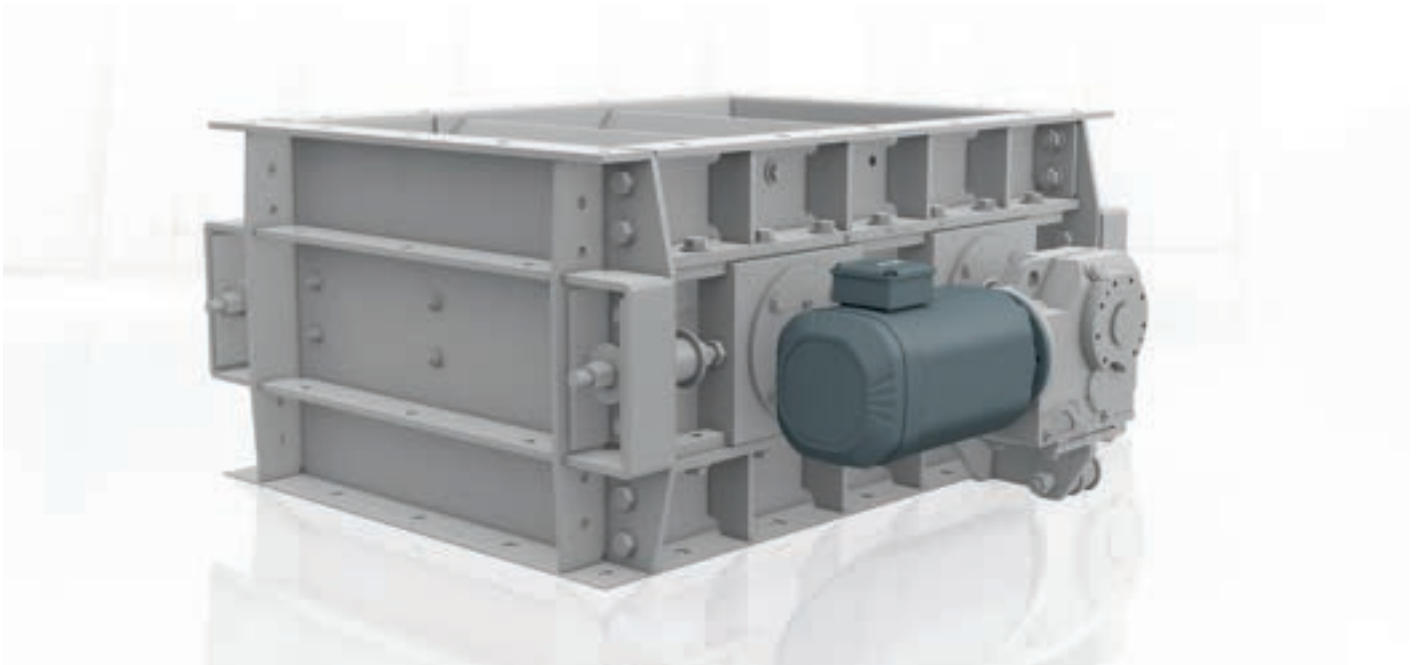
Hard face welded and grinded rolls for fine milling.



# DOUBLE ROLL CRUSHER

**binder+co**

we process the future



Type	Roll diameter	Roll length	Slot width	Drive power	Capacity*
Coarse					
WGB 470/510	470 mm	510 mm	5 – 15 mm	2 x 5,5 kW	2 – 6 t/h
WGB 470/710	470 mm	710 mm	5 – 15 mm	2 x 5,5 kW	3 – 9 t/h
WGB 800/910	800 mm	910 mm	5 – 15 mm	2 x 7,5 kW	5 – 15 t/h
Fine (input < 10 mm)					
WGB 470/510 fine	470 mm	510 mm	0,4 – 2 mm	2 x 5,5 kW	0,5 – 2,5 t/h
WGB 470/710 fine	470 mm	710 mm	0,4 – 2 mm	2 x 5,5 kW	0,7 – 3,5 t/h
WGB 800/910 fine	800 mm	910 mm	0,4 – 2 mm	2 x 7,5 kW	1 – 5 t/h

\*Dependent on slot width and input material

Binder+Co, Grazer Strasse 19-25, 8200 Gleisdorf, Austria, Tel.: +43-3112-800-0\*, office@binder-co.at, www.binder-co.com

